



GETTING STARTED GUIDE





Organization of the Screen

F1Wizard occupies the entire window in the browser that it is launched from. If you change the screen size, go to full-screen mode etc., the game will adjust automatically to the new screen size.

The screen surface is used to contain the charts that you select. These charts can be moved and resized as you see fit. To move a chart, place the mouse in the title bar at the top of the window that you want to move, click and hold the left mouse button, drag the window to a new position and lift the left mouse button. To resize a window, move the mouse to the lower right corner of the window that you

want to resize, click and hold the left mouse button and move the corner to a new position and then let go of the mouse button.

WINDOWS – Common Controls

Each window on the canvas has a colored title bar. On this title bar at the right hand side are three small controls. The first is used to minimize the window, leaving just the title bar showing. The second is used to maximize the window – which makes it occupy the entire screen. The third item at the right side of the titlebar, an 'X' is used to close the window

QUICK LINKS

There is a set of QuickLinks at the top right side of the screen. Clicking on these links makes the game do something.

Races – Displays a list of races.

You can select a year and then an event from that year.

Live – Displays the 'Live Feed' Dialog

From this dialog you can schedule events to be recorded and view the status of each.

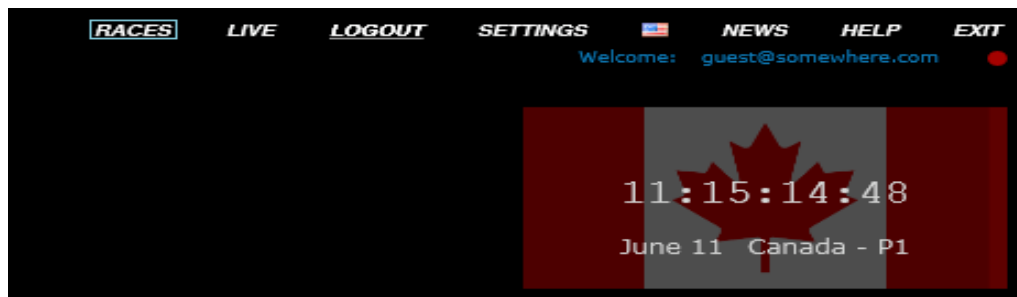
Login/Logout

The login QuickLink brings up the user login dialog. From there you can login, change your password or recover your password.

The logout logs you out of using F1Wizard on this computer. You may login with the same credentials on another computer.

Settings – Displays the User Preferences Dialog

From this dialog you can select default drivers and chart types. You can also view your game licenses and select full screen mode.



Language Identifier

Clicking on the country flag, allows you to choose a different language to use for the text in the game. During the Beta program (until July, 2010), both English and French are supported. In July of 2010, support for German, Spanish and Italian will be added. Additional languages will be added over time.

News

Clicking News will open a new browser window and will display F1Wizard-related news.

Help

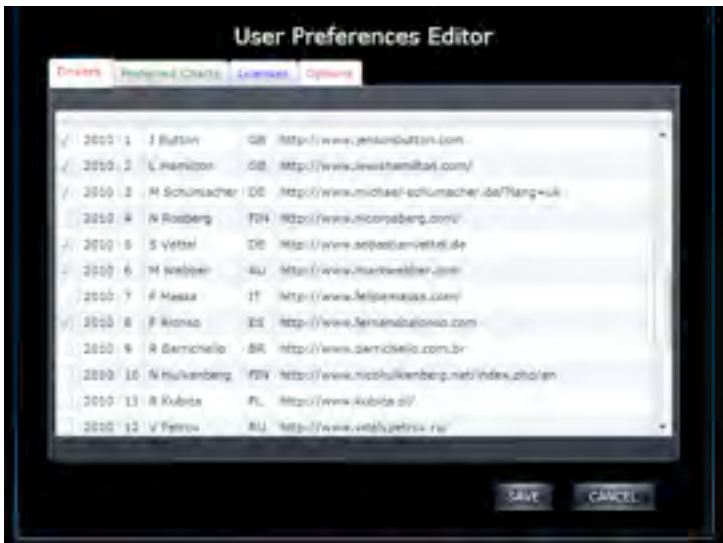
Clicking Help will open a new browser window and will display online help for the F1Wizard game.

Exit

Clicking Exit will end your F1Wizard game session.

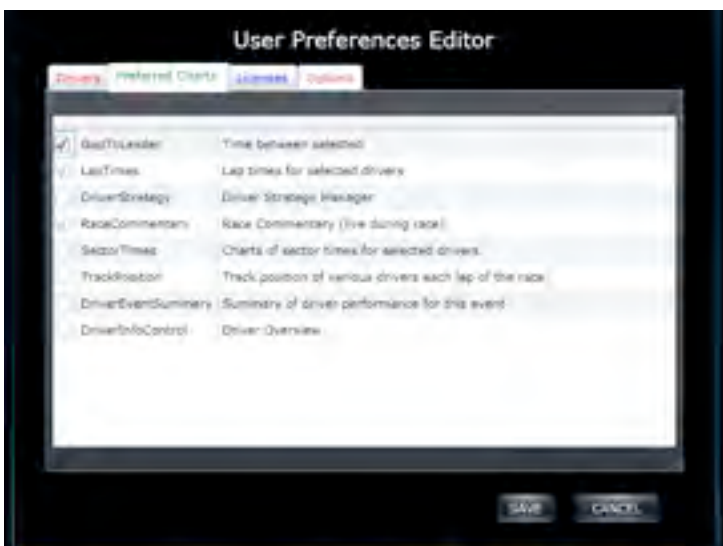
Settings Dialog

The settings dialog allows you to customize F1Wizard to suit your preferences. The dialog is organized into a series of four tabs.



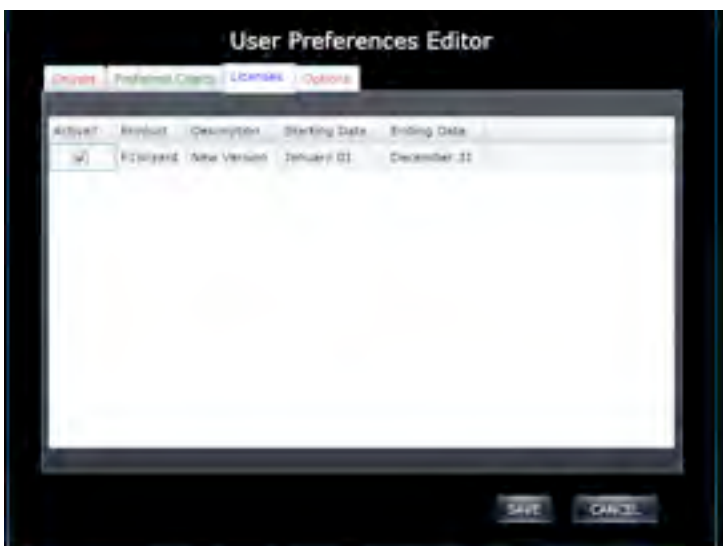
Drivers – Allows you to select your set of preferred drivers

When various charts are opened, the information for these drivers will be shown.



Preferred Charts – Allows you to select your default charts

These are automatically opened when you begin playback of a race.



Licenses – Displays a list of your game licenses

Licenses are granted for specific periods of time and are used to authorize access to various features of the game.

Options – Allows you to select various game options

* Such as start up in full screen mode.

SELECTING A RACE

Clicking on the “RACES” QuickLink will bring up the Race Selection dialog. From here you can select a year and a particular event (practice, qualifying and race) to show.

The list contains the following information:

The name of the event and the country

The date of the event

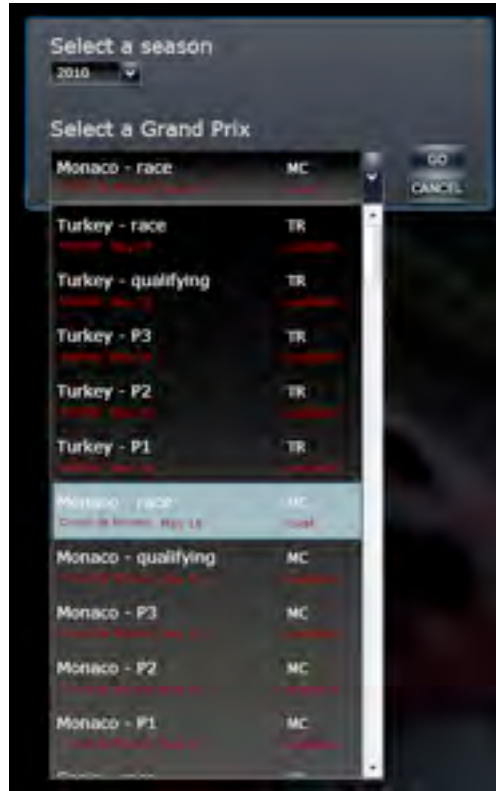
A status to indicate:

Local – the race telemetry has been downloaded to your pc

Available – the race telemetry is available and can be downloaded to your pc by just selecting the race

Scheduled – you have used the live feed manager to schedule recording of the race

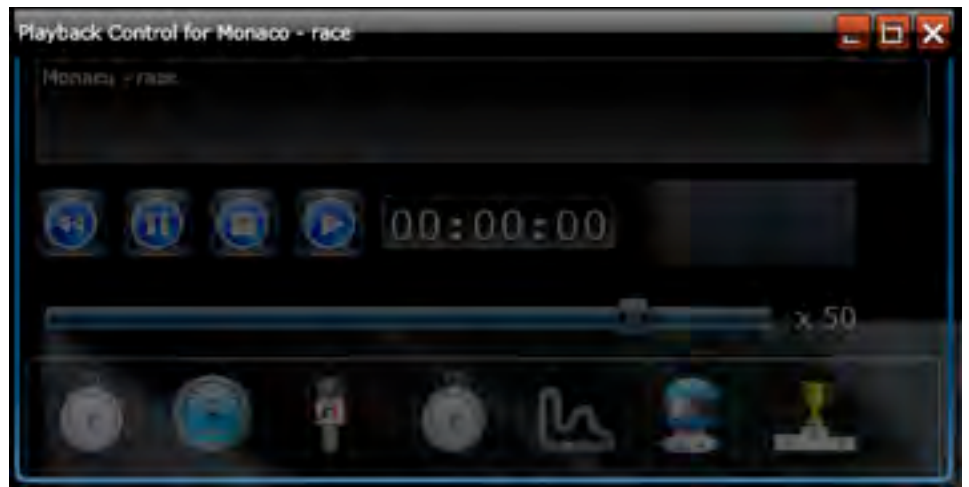
Recording – telemetry information for this event is currently being recorded. While recording this information can be viewed, in real-time.



THE VCR CONTROL - Controlling the playback of a race

Once a race is selected, the VCR control will appear at the top left side of the window. This controls the playback of the race event selected.

At the top left is the latest race commentary and other important messages. The four VCR-like controls allow you to rewind (to the beginning), pause playback, stop and play the event. The event time is shown to the left. The third section contains a slider control to allow you to set the playback speed from slow-motion to up to 50x speed. The set of icons shown at the bottom are used to select a chart to display. Moving the mouse over a chart shows a live preview of the chart information. Clicking the chart con causes a separate window to appear which will display this chart.



CHARTS

Common Controls on All Graphical Charts

Each graph has two slider controls that can be used to pan and zoom the chart. The horizontal slider at the bottom of the chart controls the zoom effect. Moving the slider knob to the left zooms into the data being showed. Moving it to the right

zooms out. The vertical slider to the right of the graph controls the pan effect. Moving the knob upwards slides the viewable window upwards-towards higher values (e.g. Times).

When the last open chart for a given race is closed, the VCR control is also close. If the VCR control is closed, all open charts for that event are also closed.



Lap Times

This chart shows the lap times for each selected driver. The right side contains a list of drivers. A checkbox is provided to enable you to select if this drivers laptimes should be included in the graph. Use this chart to enter your per-driver strategies for this race event. This is more fully explored in another section.



Gap-To-Leader

This chart shows the gap, in seconds, of each driver as compared to the leader.



Sector Times

This chart shows three graphs, one for each of the three sectors. The sector times for each selected drivers for each lap is displayed.



Race Commentary

This chart shows the commentary from race central.



Driver Event Statistics

This chart shows a set of real-time statistics for each of the selected drivers.

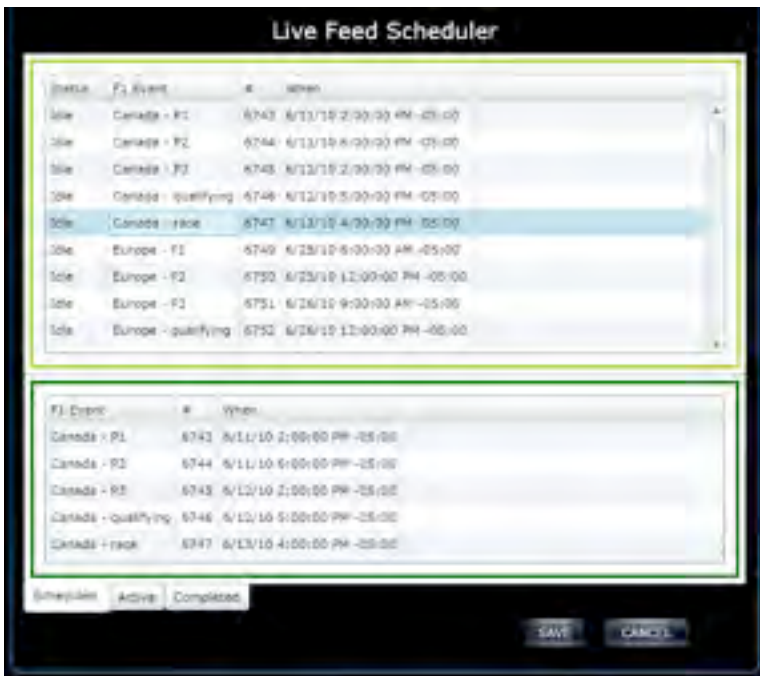
P – position
Car – FIA Car number
Lap – current lap number
Driver – driver name
Worst – slowest lap time
Avg – average lap time
Best – fastest lap time
Sec.1 – last sector 1 time
Sec.2 – last sector 2 time
Sec.3 – last sector 3 time
F.1 – fastest sector 1 time
F.2 – fastest sector 2 time
F.3 – fastest sector 3 time
R.1 – ranking for sector 1
R.2 – ranking for sector 2
R.3 – ranking for sector 3



Driver Information

This chart shows a collection of information about each selected driver.

Driver – the driver name. You can click on this name and a new browser window will open and take you to the drivers website.



LiveFeed Scheduler

The LiveFeed Scheduler allows to set a recording schedule for future F1 events and to monitor the progress.

To schedule an event to be recorded, select the 'Scheduled' tab and the double click the events that you wish to schedule. When the event begins recording, it will appear in the 'Active' tab. When recording completed, it will appear in the 'Completed' tab.

Account Login

guest@somewhere.com

Password

LOGIN

CANCEL

Remember me for 14 days

Login/Logout

The Login screen allows you to sign on to the system.

It can also be used to recover or change your password should you forget it.

